



NEW
COLLECTION

FABRIC
CATALOG

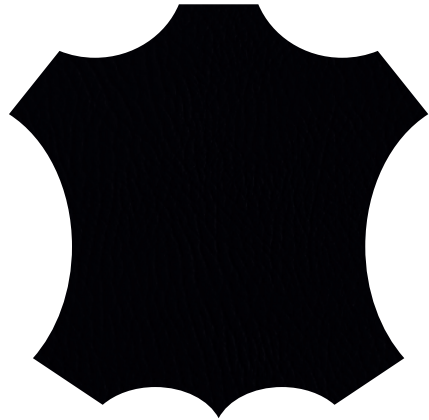
20
26
—

- MILENIUM
- MICROTEX
- MARATHON
- SPAZIO
- MESH

©ROLIC -
SIT SMART

ROLIC.COM.AR





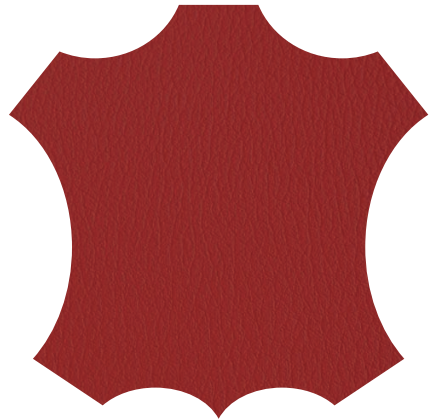
MIN - Negro



MGA - Gris Automotor



MBL - Blanco



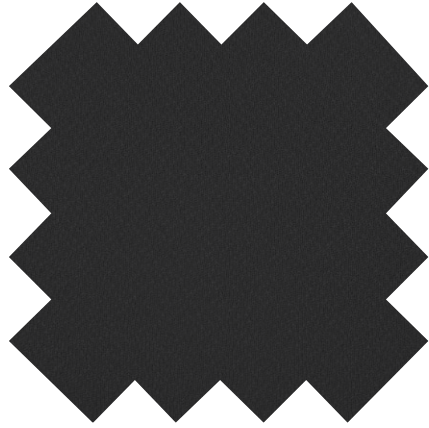
PAR - Paraty Rojo



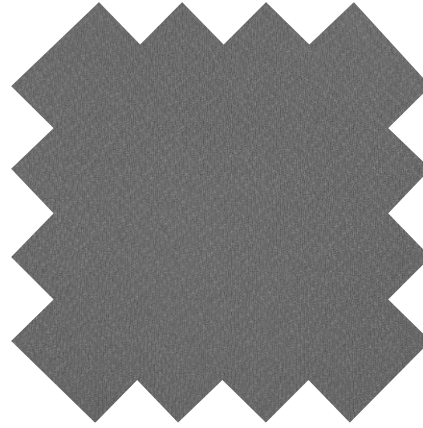
MIA - Azul



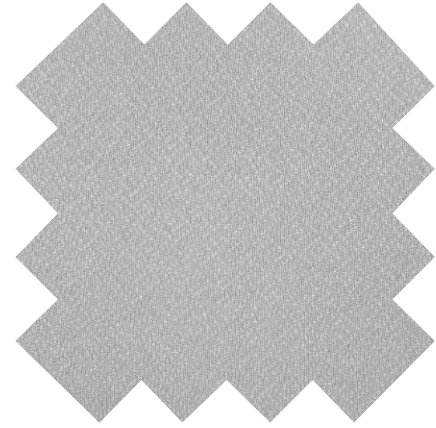
MBT - Beige Lotus



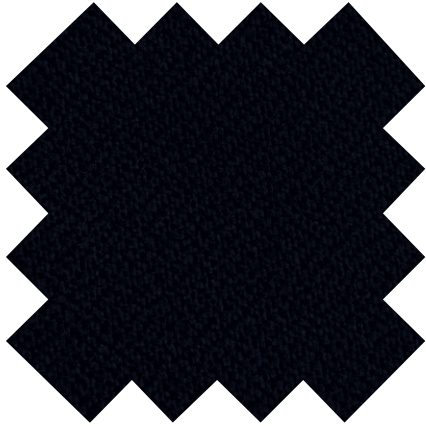
MT1 - Negro



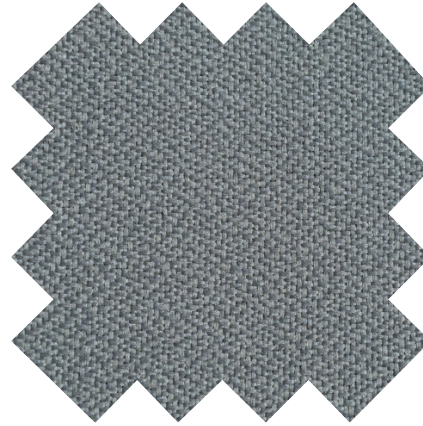
MT2 - Gris Oscuro



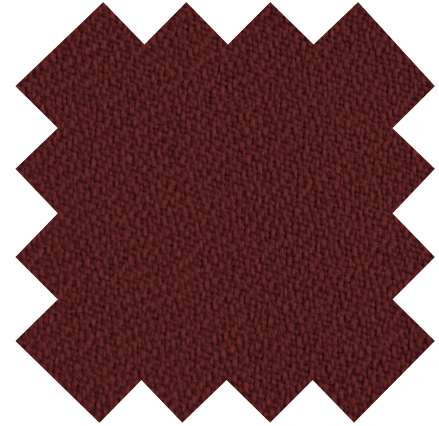
MT3 - Gris Claro



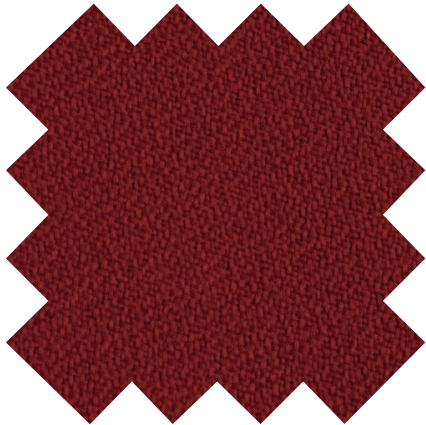
MAN - Negro



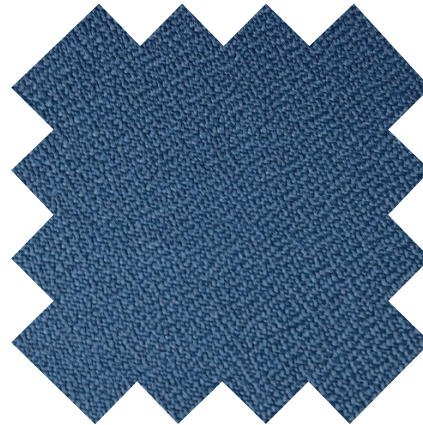
MAG - Gris Oscuro



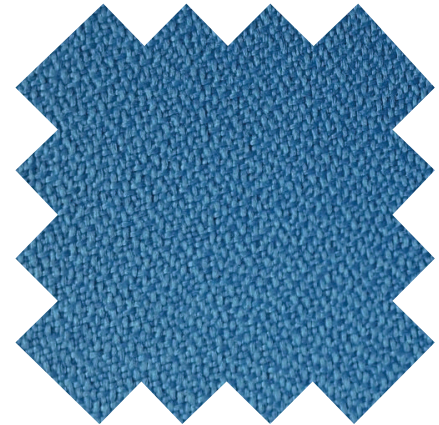
MAB - Bordo



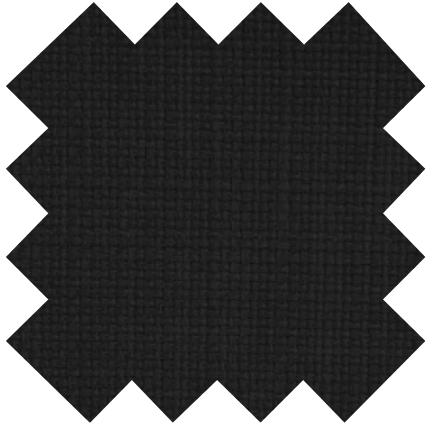
MAR - Rojo



MAM - Azul Marino



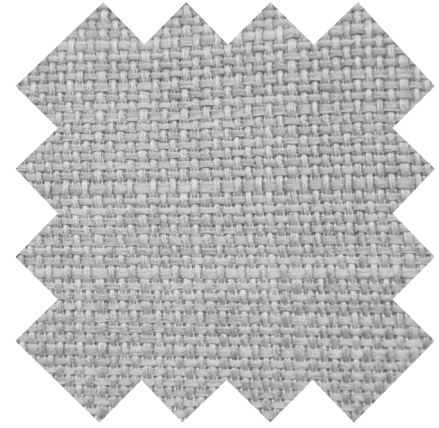
MAA - Azul



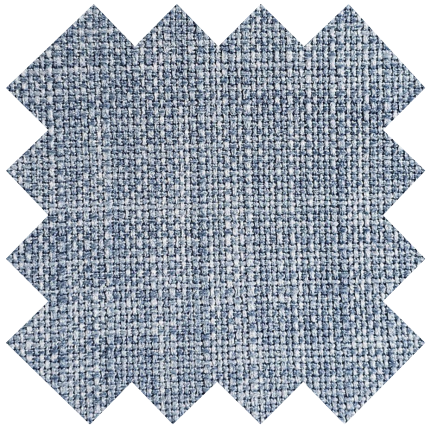
SPN - Negro



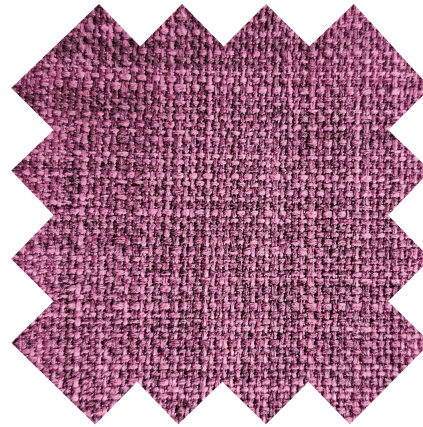
SPP - Petroleo



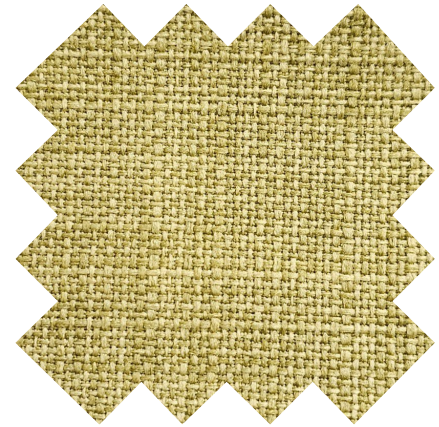
SPS - Stone



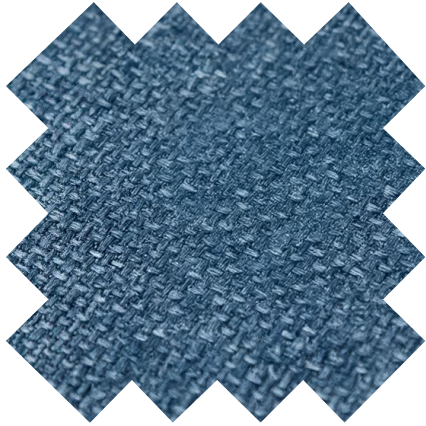
SCI - Cielo



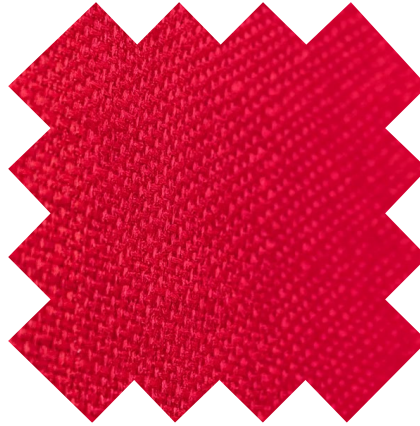
SCR - Ciruela



SVE - Verde



SAZ - Azul



SRO - Rojo

— MESH —



Red Mesh Negra

GAMMA / LINK /
COOL TOTAL BLACK

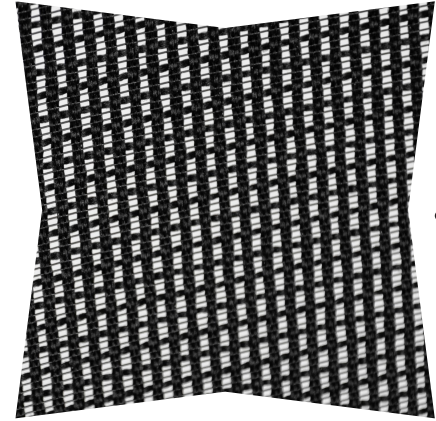
PRODUCTO COMPATIBLE



Red Mesh Gris Medio

GAMMA / GROU WHITE / LINK GRIS

PRODUCTO COMPATIBLE



Red Mesh J1 Negra

GROU

PRODUCTO COMPATIBLE



Mesh Lineal Negra

FREE / EQUIS

PRODUCTO COMPATIBLE



Elastic Mesh Gris

COOL

PRODUCTO COMPATIBLE




The ROLIC logo is rendered in a bold, white, sans-serif font. The letter 'R' is stylized with a thick, diagonal stroke that extends downwards and to the left. A registered trademark symbol (®) is positioned at the top right of the 'C'.

ROLIC®

#ROLICERGONOMÍA

ROLIC.COM.AR

Av. Lisandro de la Torre 2149
(C1440ECJ) Ciudad de Buenos Aires
011 4687-2594

Seguinos en las redes:  sillasrolic  sillasrolic  rolic-sa